

Materials Table



Large Fuel Tank

- 5L Large fuel tank easily meets long time operation requirement

Lightweight Design

- More than 15% lighter than similar generator units

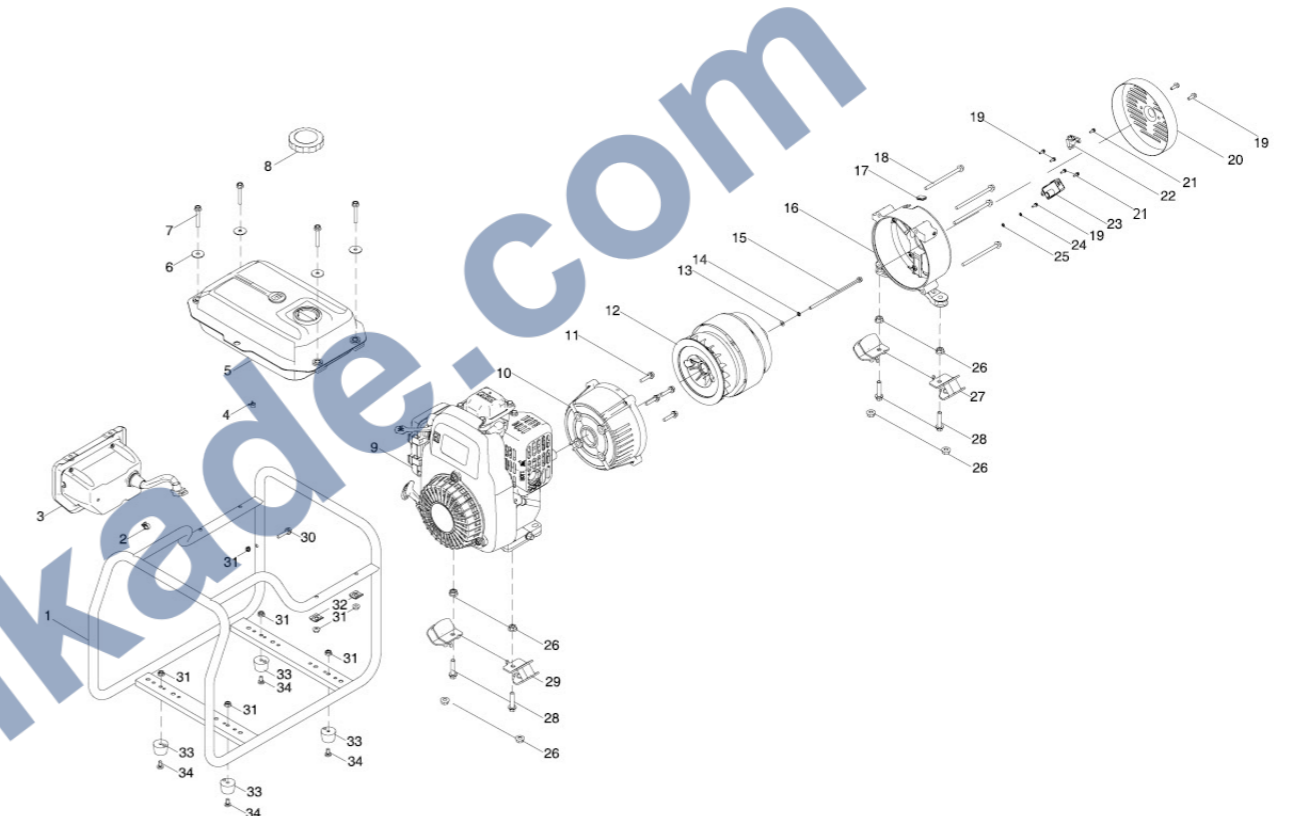
Robot welding frame

- To ensure beautiful appearance, less welding mark

Cost-effective

Specification

Model	PH1200		PH1800	
	<b>Generator</b>			
Starting System	Recoil Starting			
Alternator Material	100% Cu			
Frequency (HZ)	50Hz	60Hz	50Hz	60Hz
Voltage(V)	230	120(120/240)	230	120(120/240)
Rated Output (KW)	0.9	1	1.3	1.5
Max Output(KW)	1.2	1.3	1.5	1.8
THD(%)	≤20		≤20	
Running Time At 50% loading(H)	16	16	10	10
Fuel Tank Size (L )	5		5	
Noise dB(A)	95		95	
Insulation Grade	F		F	
	<b>Engine</b>			
Model	NH100		NH150	
Engine Type	OHV, Air Cooling, 4 Stroke			
Displacement (cc)	99		149	
	<b>Packing Details</b>			
Outside Packing Dimensions (mm) (L xW x H)	510×375×405		510×375×405	
20FT Loading Qty	340pcs		340pcs	
40FT Loading Qty	705pcs		705pcs	
40HQ Loading Qty	846pcs		846pcs	
Net Weight (kg)	23		25	
Certifications	CE+EC	/	CE+EC	/



No.	Part	Specification	Quantities	Piece(S)
1	Frame Assembly	497×370×352_φ 19_	1	PCS
2	Clip	φ 13	1	PCS
3	Control Panel		1	PCS
4	Clamp		1	PCS
5	Fuel Tank		1	PCS
6	Washer	φ 6.5×2× φ 25	4	PCS
7	Bolt	M6×40	4	PCS
8	Fuel Cap		1	PCS
9	Engine	NH150-2	1	PCS
10	Front End Cover		1	PCS
11	Bolt	M8×20	4	PCS
12	Alternator		1	PCS
13	Washer	φ 8	1	PCS
14	Washer	φ 8	1	PCS
15	Bolt	M8×190	1	PCS
16	Rear Bracket		1	PCS
17	Plug	Rubber	1	PCS

No.	Part	Specification	Quantities	Piece(S)
18	Bolt	M6×105	4	PCS
19	Bolt	M5×14	5	PCS
20	End Cover		1	PCS
21	Bolt	M5×18	3	PCS
22	Brush		1	PCS
23	Voltage Regulator		1	PCS
24	Washer	φ 5	1	PCS
25	Washer	φ 5	1	PCS
26	Nut	M8	8	PCS
27	Damping Pad		2	PCS
28	Bolt	M8×30	4	PCS
29	Damping Pad		2	PCS
30	Bolt	M6×30	1	PCS
31	Nut	M6	7	PCS
32	Washer		2	PCS
33	Damping Pad	Rubber	4	PCS
34	Screw	M6×12	4	PCS