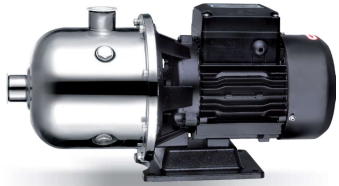




EDH Stainless Steel Horizontal Multistage Pump



Application

- It is applicable to household water supply, equipment support, pipeline pressurization, garden watering, vegetable greenhouse watering, fish farming and poultry raising, industrial and mining, water supply and drainage of enterprises and high-rise buildings, central air conditioner and centralized heating circulation system, etc.

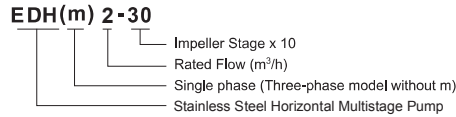
Pump

- AISI304 shaft
- Max. Liquid temperature: +85°C
- Altitude: up to 1000 m
- Max. suction: 8 m
- Max. inlet pressure: limited by max. operating pressure

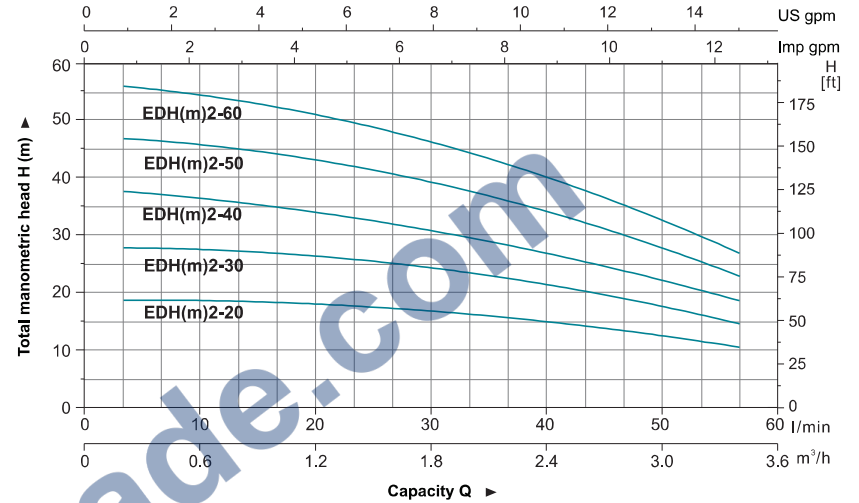
Motor

- Motor with copper winding
- Built-in thermal protector for single phase motor
- Insulation class: F
- Protection class: IP44
- Max. ambient temperature: +40°C

Identification Codes

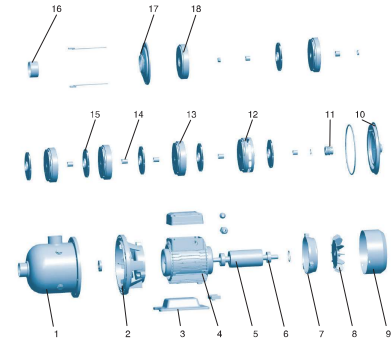


Hydraulic Performance Curves



Materials Table

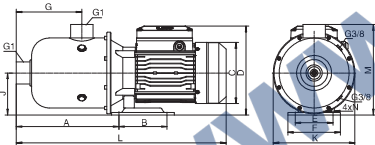
N.o.	Part	Material
1	Pump body	AISI 304/AISI 316
2	Support	ZL102
3	Bottom plate	Cast iron
4	Stator	
5	Rotor	
6	Bearing	
7	Rear cover	ZL102
8	Fan	PP
9	Fan cover	08F
10	Bracket cover	AISI 304
11	Mechanical seal	Carbon/Ceramic
12	Diffuser 3	AISI 304
13	Diffuser 2	AISI 304
14	Sleeve	AISI 304
15	Impeller	AISI 304
16	Spacer bush	AISI 304
17	Pressure plate	AISI 304
18	Diffuser 1	AISI 304



Technical Data

Model	Power (P2)		Q (m ³ /h)									
	Single-phase	Three-phase	0	0.5	1.0	1.5	2.0	2.5	3.0	3.5	4.0	
EDHm2-20	EDH2-20	0.37	0.5	17.5	16.7	16.2	15	14	12	10.6	8.5	6.5
EDHm2-30	EDH2-30	0.37	0.5	27.5	26.6	25.6	23.8	21.3	19.2	16.1	12.5	7.2
EDHm2-40	EDH2-40	0.55	0.75	37	36.2	35.4	33.2	30.7	27.6	22.9	18.4	12.6
EDHm2-50	EDH2-50	0.55	0.75	48	44	42.1	39.5	35.9	30.8	25.7	19.6	13.5
EDHm2-60	EDH2-60	0.75	1.0	52	50.8	49.2	45.6	41.5	36.2	30.4	23.4	14.3

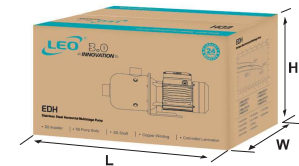
Dimension



Model	L	A	B	C	D	E	F	G	J	K	M	N
EDH(m)2-20	422	182	138	Φ140	220	108	130	120	110	195	213	Φ9
EDH(m)2-30												
EDH(m)2-40												
EDH(m)2-50												
EDH(m)2-60												

Package Information

Model	GW (Kgs)	L (mm)	W (mm)	H (mm)	Quantity (PCS/20 TEU)
EDH(m)2-20	10.3	460	224	278	1088
EDH(m)2-30	10.8	460	224	278	1088
EDH(m)2-40	12.2	460	224	278	1088
EDH(m)2-50	13	460	224	278	1088
EDH(m)2-60	14	460	224	278	1088





EDH

Stainless Steel Horizontal Multistage Pump

Application

- It is applicable to household water supply, equipment support, pipeline pressurization, garden watering, vegetable greenhouse watering, fish farming and poultry raising, industrial and mining, water supply and drainage of enterprises and high-rise buildings, central air conditioner and centralized heating circulation system, etc.

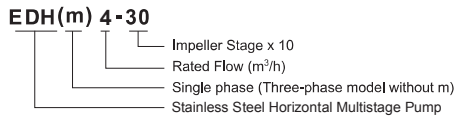
Pump

- AISI304 shaft
- Max. Liquid temperature: +85°C
- Altitude: up to 1000 m
- Max. suction: 8 m
- Max. inlet pressure: limited by max. operating pressure

Motor

- Motor with copper winding
- Built-in thermal protector for single phase motor
- Insulation class: F
- Protection class: IP44
- Max. ambient temperature: +40°C

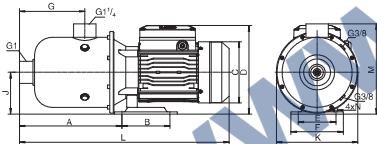
Identification Codes



Technical Data

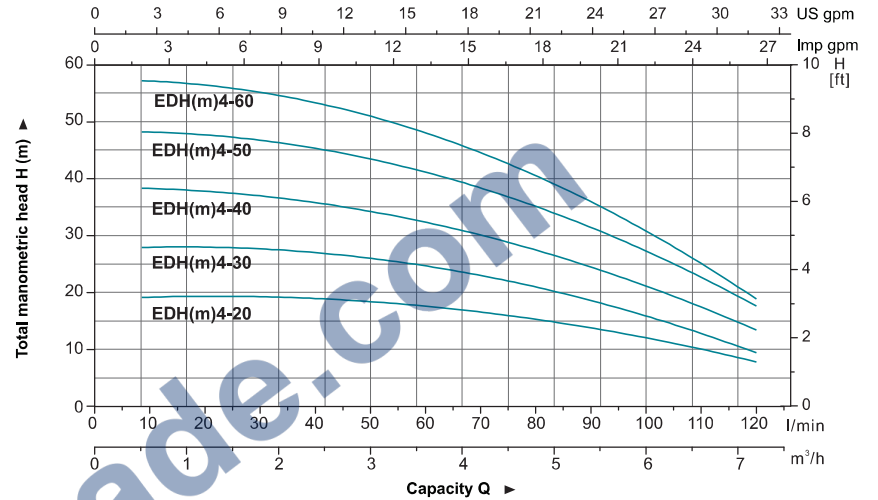
Model		Power (P2)		Q (m ³ /h)		Q (l/min)		H (m)			
Single-phase	Three-phase	kW	HP	0	1.0	2.0	3.0	4.0	5.0	6.0	7.0
EDHm4-20	EDH4-20	0.55	0.75	0	17	33	50	67	83	100	117
EDHm4-30	EDH4-30	0.55	0.75	19	18.3	17.2	16.1	14.3	11.3	6.3	2.3
EDHm4-40	EDH4-40	0.7	1.0	28.3	27.7	26.4	24.6	22.1	18.8	13.5	7.3
EDHm4-50	EDH4-50	1.1	1.5	39.2	36.1	35.2	32.9	29.9	24.7	18.6	9.2
EDHm4-60	EDH4-60	1.1	1.5	48.7	46.5	45	42.5	37	31.8	21.8	10
				59	55.5	53	47	42.5	35	23	12

Dimension



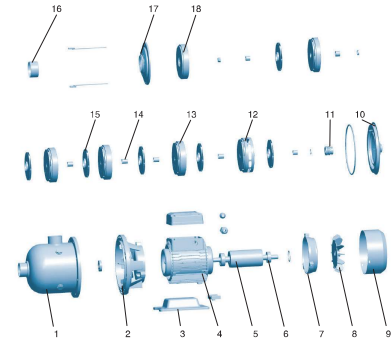
Model	L	A	B	C	D	E	F	G	J	K	M	N
EDH(m)4-20	422	182	138	Φ140	220	108	130	120	110	195	213	Φ9
EDH(m)4-30												
EDH(m)4-40												
EDH(m)4-50												
EDH(m)4-60												

Hydraulic Performance Curves



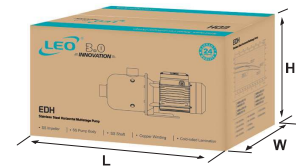
Materials Table

No.	Part	Material
1	Pump body	AISI 304/AISI 316
2	Support	ZL102
3	Bottom plate	Cast iron
4	Stator	
5	Rotor	
6	Bearing	
7	Rear cover	ZL102
8	Fan	PP
9	Fan cover	08F
10	Bracket cover	AISI 304
11	Mechanical seal	Carbon/Ceramic
12	Diffuser 3	AISI 304
13	Diffuser 2	AISI 304
14	Sleeve	AISI 304
15	Impeller	AISI 304
16	Spacer bush	AISI 304
17	Pressure plate	AISI 304
18	Diffuser 1	AISI 304



Package Information

Model	GW (Kgs)	L (mm)	W (mm)	H (mm)	Quantity (PCS/20 TEU)
EDH(m)4-20	11.5	460	224	278	1088
EDH(m)4-30	11.8	460	224	278	1088
EDH(m)4-40	12	460	224	278	1088
EDH(m)4-50	14.3	460	224	278	1088
EDH(m)4-60	14.5	460	224	278	1088





EDH Stainless Steel Horizontal Multistage Pump



Application

- It is applicable to household water supply, equipment support, pipeline pressurization, garden watering, vegetable greenhouse watering, fish farming and poultry raising, industrial and mining, water supply and drainage of enterprises and high-rise buildings, central air conditioner and centralized heating circulation system, etc.

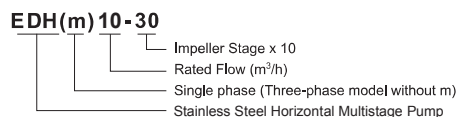
Pump

- AISI304 shaft
- Max. Liquid temperature: +85°C
- Altitude: up to 1000 m
- Max. suction: 8 m
- Max. inlet pressure: limited by max. operating pressure

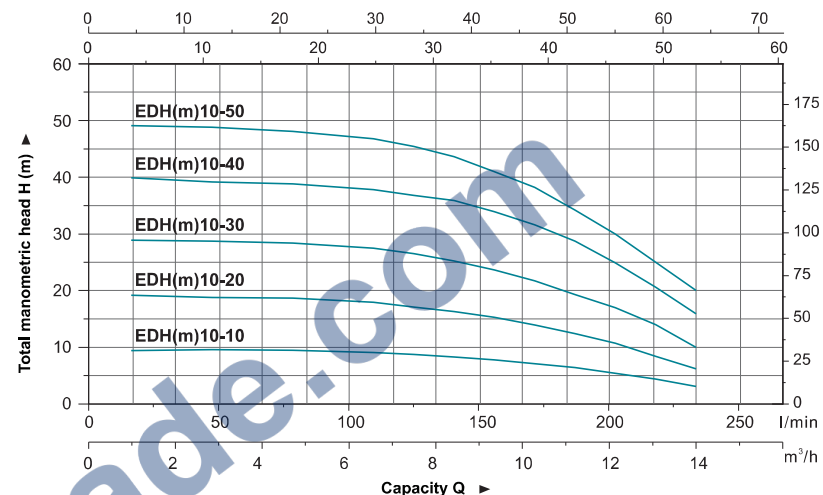
Motor

- Motor with copper winding
- Built-in thermal protector for single phase motor
- Insulation class: F
- Protection class: IP44
- Max. ambient temperature: +40°C

Identification Codes

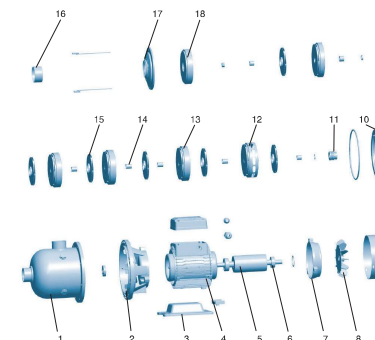


Hydraulic Performance Curves



Materials Table

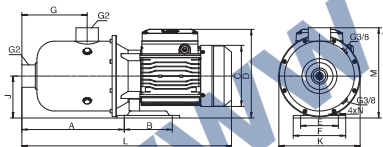
No.	Part	Material
1	Pump body	AISI 304/AISI 316
2	Support	ZL102
3	Bottom plate	Cast iron
4	Stator	
5	Rotor	
6	Bearing	
7	Rear cover	ZL102
8	Fan	PP
9	Fan cover	08F
10	Bracket cover	AISI 304
11	Mechanical seal	Carbon/Ceramic
12	Diffuser 3	AISI 304
13	Diffuser 2	AISI 304
14	Sleeve	AISI 304
15	Impeller	AISI 304
16	Spacer bush	AISI 304
17	Pressure plate	AISI 304
18	Diffuser 1	AISI 304



Technical Data

Model	Power		Q (m ³ /h)													
	kW	HP	0	2	4	6	7	8	9	10	11	12	13	14		
EDH(m)10-10	0.75	1.0	9.4	9.6	9.5	9.1	8.7	8.3	7.8	7.1	6.4	5.4	4.4	3.1		
EDH(m)10-20			19.2	18.8	18.7	17.9	17.1	16.3	15.3	13.9	12.4	10.7	8.4	6.2		
EDH(m)10-30	1.1	1.5	28.5	28.7	28.7	27.5	26.5	25.2	23.6	21.7	19.3	17	14	10		
EDH(m)10-40	1.5	2.0	37	39.9	40.1	38.7	37.2	35.9	33.9	31.6	28.7	24.9	19.7	15.9		
EDH(m)10-50	2.2	3.0	48.3	48.8	49.3	47.2	45.4	43.6	41	38.2	34.2	30	24.5	18		

Dimension



Model	L	A	B	C	D	E	F	G	J	K	M	N
EDH(m)10-10	555	295	138	Φ164	245	108	150	188	120	233	266	Φ8.5
EDH(m)10-20												
EDH(m)10-30												
EDH(m)10-40	602			Φ173	254							
EDH(m)10-50												

Package Information

Model	GW (Kgs)	L (mm)	W (mm)	H (mm)	Quantity (PCS/20 TEU)
EDH(m)10-10	19	595	275	302	553
EDH(m)10-20	19.2	595	275	302	553
EDH(m)10-30	21.5	595	275	302	553
EDH(m)10-40	22.4	640	275	302	525
EDH(m)10-50	26.7	640	275	302	525





EDH

Stainless Steel Horizontal Multistage Pump



Application

- It is applicable to household water supply, equipment support, pipeline pressurization, garden watering, vegetable greenhouse watering, fish farming and poultry raising, industrial and mining, water supply and drainage of enterprises and high-rise buildings, central air conditioner and centralized heating circulation system, etc.

Pump

- AISI304 shaft
- Max. Liquid temperature: +85°C
- Altitude: up to 1000 m
- Max. suction: 8 m
- Max. inlet pressure: limited by max. operating pressure

Motor

- Motor with copper winding
- Built-in thermal protector for single phase motor
- Insulation class: F
- Protection class: IP44
- Max. ambient temperature: +40°C

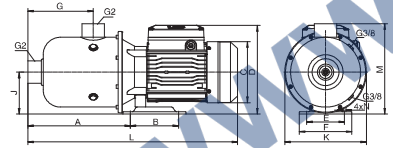
Identification Codes



Technical Data

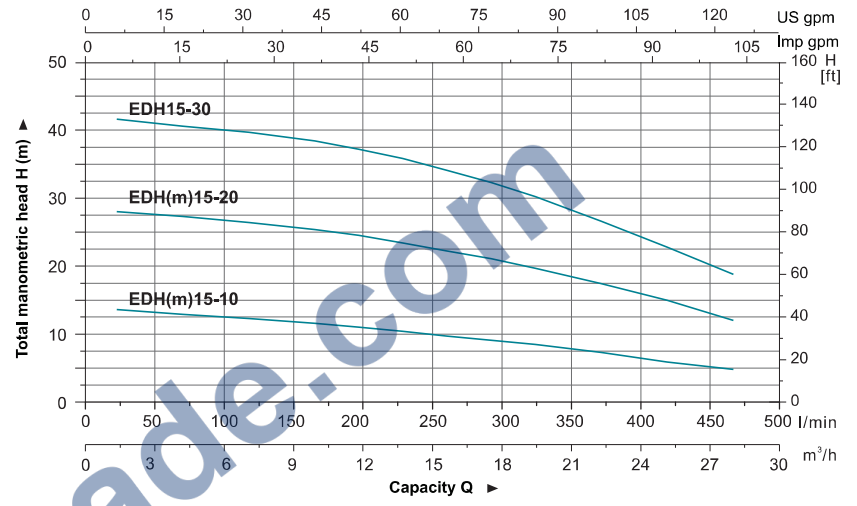
Model	Power		Q (m ³ /h)												
	kW	HP	0	3	6	9	11	13	15	17	19	22	25	28	
EDH(m)15-10	1.1	1.5	13.6	12.7	12.5	11.6	11	10.4	9.7	9.1	8.5	7.7	5.9	4.8	
EDH(m)15-20	2.2	3.0	28	27.3	26.4	25.4	24.5	23.4	22.2	21.1	19.7	17.4	15	12	
EDH 15-30	3.0	4.0	41.6	40.6	39.7	38.4	37.2	35.8	34.1	32.3	30.2	26.6	22.8	18.8	

Dimension



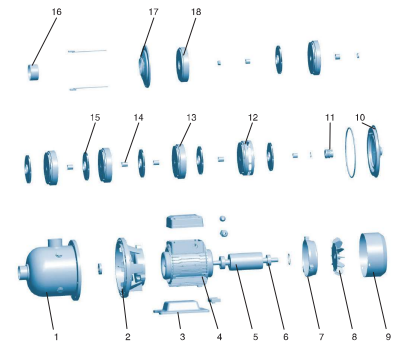
Model	L	A	B	C	D	E	F	G	J	K	M	N
EDH(m)15-10	555			Φ164	245							
EDH(m)15-20	602	295	138	Φ173	254	108	150	188	120	233	260	Φ8.5
EDH15-30	618			Φ194	261							

Hydraulic Performance Curves



Materials Table

No.	Part	Material
1	Pump body	AISI 304/AISI 316
2	Support	ZL102
3	Bottom plate	Cast iron
4	Stator	
5	Rotor	
6	Bearing	
7	Rear cover	ZL102
8	Fan	PP
9	Fan cover	08F
10	Bracket cover	AISI 304
11	Mechanical seal	Carbon/Ceramic
12	Diffuser 3	AISI 304
13	Diffuser 2	AISI 304
14	Sleeve	AISI 304
15	Impeller	AISI 304
16	Spacer bush	AISI 304
17	Pressure plate	AISI 304
18	Diffuser 1	AISI 304



Package Information

Model	GW (Kgs)	L (mm)	W (mm)	H (mm)	Quantity (PCS/20 TEU)
EDH(m)15-10	20.6	595	275	302	553
EDH(m)15-20	26.9	640	275	302	525
EDH15-30	30.2	660	275	302	497





EDH Stainless Steel Horizontal Multistage Pump

Application

- It is applicable to household water supply, equipment support, pipeline pressurization, garden watering, vegetable greenhouse watering, fish farming and poultry raising, industrial and mining, water supply and drainage of enterprises and high-rise buildings, central air conditioner and centralized heating circulation system, etc.

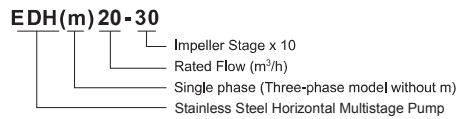
Pump

- AISI304 shaft
- Max. Liquid temperature: +85°C
- Altitude: up to 1000 m
- Max. suction: 8 m
- Max. inlet pressure: limited by max. operating pressure

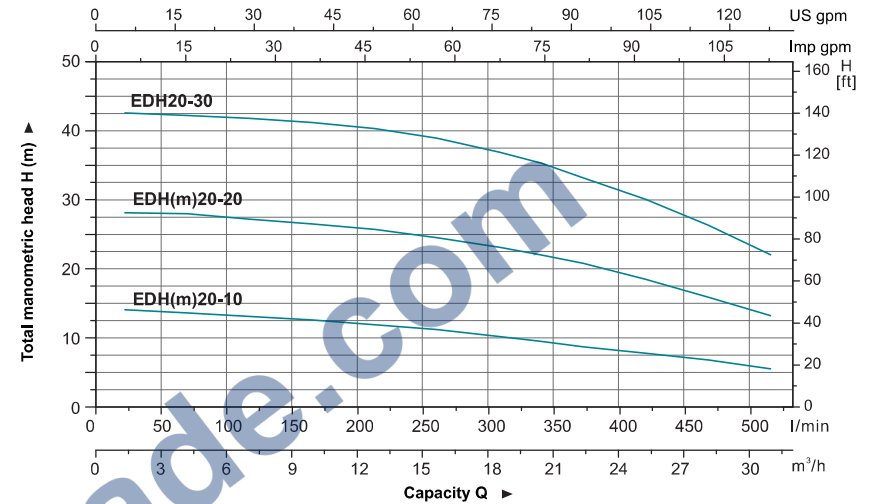
Motor

- Motor with copper winding
- Built-in thermal protector for single phase motor
- Insulation class: F
- Protection class: IP44
- Max. ambient temperature: +40°C

Identification Codes

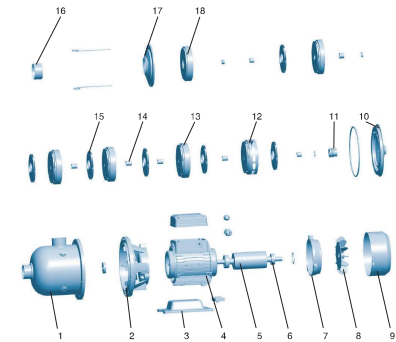


Hydraulic Performance Curves



Materials Table

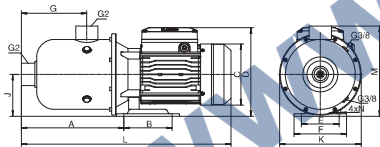
No.	Part	Material
1	Pump body	AISI 304/AISI 316
2	Support	ZL102
3	Bottom plate	Cast iron
4	Stator	
5	Rotor	
6	Bearing	
7	Rear cover	ZL102
8	Fan	PP
9	Fan cover	08F
10	Bracket cover	AISI 304
11	Mechanical seal	Carbon/Ceramic
12	Diffuser 3	AISI 304
13	Diffuser 2	AISI 304
14	Sleeve	AISI 304
15	Impeller	AISI 304
16	Spacer bush	AISI 304
17	Pressure plate	AISI 304
18	Diffuser 1	AISI 304



Technical Data

Model	Power		Q (m ³ /h)																																																													
	kW	HP	0	3	6	9	12	15	18	20	22	25	28	31																																																		
EDH(m)20-10	1.1	1.5	<table border="1"> <thead> <tr> <th>H (m)</th> <th>0</th><th>50</th><th>100</th><th>150</th><th>200</th><th>250</th><th>300</th><th>333</th><th>367</th><th>417</th><th>467</th><th>517</th> </tr> </thead> <tbody> <tr> <td>14.1</td> <td>13.5</td><td>13.1</td><td>12.6</td><td>11.9</td><td>11.2</td><td>10.2</td><td>9.8</td><td>8.7</td><td>8</td><td>6.8</td><td>5.2</td> </tr> <tr> <td>28.1</td> <td>28</td><td>27.2</td><td>26.5</td><td>25.7</td><td>24.5</td><td>23.1</td><td>22</td><td>20.8</td><td>18.5</td><td>15.9</td><td>13.2</td> </tr> <tr> <td>42.6</td> <td>42.2</td><td>41.5</td><td>41.2</td><td>40.3</td><td>38.9</td><td>36.9</td><td>35.3</td><td>33.2</td><td>30.1</td><td>26.3</td><td>22</td> </tr> </tbody> </table>													H (m)	0	50	100	150	200	250	300	333	367	417	467	517	14.1	13.5	13.1	12.6	11.9	11.2	10.2	9.8	8.7	8	6.8	5.2	28.1	28	27.2	26.5	25.7	24.5	23.1	22	20.8	18.5	15.9	13.2	42.6	42.2	41.5	41.2	40.3	38.9	36.9	35.3	33.2	30.1	26.3	22
H (m)	0	50														100	150	200	250	300	333	367	417	467	517																																							
14.1	13.5	13.1														12.6	11.9	11.2	10.2	9.8	8.7	8	6.8	5.2																																								
28.1	28	27.2	26.5	25.7	24.5	23.1	22	20.8	18.5	15.9	13.2																																																					
42.6	42.2	41.5	41.2	40.3	38.9	36.9	35.3	33.2	30.1	26.3	22																																																					
EDH(m)20-20	2.2	3.0																																																														
EDH20-30	4.0	5.5																																																														

Dimension



Model	L	A	B	C	D	E	F	G	J	K	M	N
EDH(m)20-10	555	295	138	Φ164	245							
EDH(m)20-20	602			Φ173	254	108	150					
EDH20-30	618	285	190	Φ194	261	170	200	188	120	233	260	Φ8.5

Package Information

Model	GW (Kgs)	L (mm)	W (mm)	H (mm)	Quantity (PCS/20' TEU)
EDH(m)20-10	20.6	595	275	302	553
EDH(m)20-20	27	640	275	302	525
EDH20-30	33	660	275	302	497

